



NEW PRODUCTS AVAILABLE FOR SALE

KW 470 626



07,5

COILS

Adatt./Suitable:

INFINITI

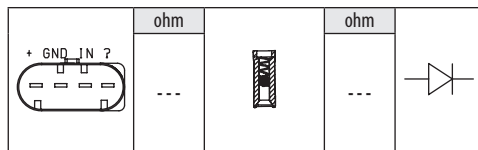
- 22448-2V70A
- 22448-HG00A
- 22448-HG00B
- 22448-HG00C
- 22448-HG00E

MERCEDES-BENZ

- A 274 906 06 00
- A 274 906 07 00
- A 274 906 14 00

NEW - ITEM NOW AVAILABLE FROM PRODUCTION

- NUOVO - ARTICOLO ORA DISPONIBILE PER LA VENDITA
- NOUVEAU - ARTICLE DISPONIBLE EN PRODUCTION COURANTE
- NEU - JETZ ZUM VERKAUF VERFÜGBARER ARTIKEL
- NUEVO - ARTICULO AHORA DISPONIBLE EN PRODUCCION



INFINITI

Q30 2.0T	270920	11/15 →
Q30 2.0T AWD	270920	11/15 →
Q50 2.0T	M274	04/14 →
Q60 2.0T	M274	09/16 →
QX30 2.0 AWD	270920	09/16 →

MERCEDES-BENZ

CLASSE CLS II CLS 250	M274.920	05/14 →
CLASSE B II B 160	M270.910	07/15 → 12/18
CLASSE B II B 180	M270.910	11/11 → 12/18
CLASSE B II B 200	M270.910	11/11 → 12/18
CLASSE B II B 200 Natural Gas Drive / B 200 c	M270.920, M270920NGT	11/12 → 12/17
CLASSE B II B 220 4-matic	M270.920	05/13 → 12/18
CLASSE B II B 250	M270.920	05/12 → 12/18
CLASSE B II B 250 4-matic	M270.920	08/14 → 12/18
CLASSE C III C 180	M274.910	02/12 →
CLASSE C III C 180 CGI	M274.910	01/08 → 01/14
CLASSE C IV C 160	M274.910	04/15 →
CLASSE C IV C 180	M274.910	03/14 →
CLASSE C IV C 200	M274.920	12/13 → 08/18
CLASSE C IV C 200 4-matic	M274.920	04/15 → 08/18
CLASSE C IV C 250	M274.920	03/14 → 05/18
CLASSE C IV C 300	M274.920	09/15 → 12/18
CLASSE C IV C 300 4-matic	M274.920	12/13 → 08/18
CLASSE C IV C 300 e	M274.920	07/19 →
CLASSE C IV C 300 e 4-matic	M274.920	07/19 →
CLASSE C IV C 350 e	M274.920	02/15 → 08/18
CLASSE CLA AMG CLA 45 4-matic	M133.980	07/15 → 03/19
CLASSE CLA CLA 180	M270.910	01/13 → 03/19
CLASSE CLA CLA 200	M270.910	01/13 → 03/19
CLASSE CLA CLA 220 4-matic	M270.910, M270.920	01/15 →
CLASSE CLA CLA 250	M270.920	01/13 → 03/19
CLASSE CLA CLA 250 4-matic	M270.920	07/13 → 03/19
CLASSE CLA CLA 45 AMG 4-matic	M133.980	07/13 → 03/19
CLASSE E IV E 180	M274.910	12/12 →
CLASSE E IV E 200	M274.920	11/12 → 12/16
CLASSE E IV E 200 NGT	M274.920, M274920NGT	07/13 → 12/15
CLASSE E IV E 250	M274.920	11/12 → 12/16
CLASSE E V E 180	M274.910	01/17 →
CLASSE E V E 200	M274.920	01/16 →
CLASSE E V E 200 4-matic	M274.920	07/16 →
CLASSE E V E 250	M274.920	07/16 →
CLASSE E V E 300	M274.920	07/16 →
CLASSE E V E 300 e	M274.920	11/18 →
CLASSE E V E 300 e 4-matic	M274.920	07/20 →
CLASSE E V E 350 e	M274.920	07/16 →
CLASSE GLA AMG GLA 45 4-matic	M133.980	07/15 →
CLASSE GLA GLA 180	M270.910	02/15 →
CLASSE GLA GLA 200	M270.910	12/13 →
CLASSE GLA GLA 220 4-matic	M270.920	01/17 →

MERCEDES-BENZ

CLASSE GLA GLA 250	M270.920	12/13 →
CLASSE GLA GLA 250 4-matic	M270.920	12/13 →
CLASSE GLA GLA 250 Flex	M270.920	01/15 →
CLASSE GLA GLA 45 AMG 4-matic	M133.980	05/14 →
CLASSE GLC 250 4-matic	M274.920	06/15 → 04/19
CLASSE GLC 300 4-matic	M274.920	07/15 → 04/19
CLASSE GLC 300 e 4-matic	M274.920	11/19 →
CLASSE GLC 350 e 4-matic	M274.920	01/16 → 04/19
CLASSE GLK 200	M274.920	08/13 → 06/15
CLASSE GLK 250	M274.920	08/13 → 06/15
CLASSE GLK 250 4-matic	M274.920	08/13 → 06/15
CLASSE SLC 180	M274.910	01/16 →
CLASSE SLC 200	M274.920	01/16 →
CLASSE SLC 300	M274.920	01/16 →
CLASSE SLK III 200	M274.920	04/15 →
CLASSE SLK III 300	M274.920	07/15 →
GLE GLE 350 e 4-matic	M274.920	06/20 →
CLASSE A III A 160	M270.910	07/15 → 05/18
CLASSE A III A 180	M270.910	09/12 → 05/18
CLASSE A III A 200	M270.910	06/12 → 05/18
CLASSE A III A 220 4-matic	M270.920	05/14 → 05/18
CLASSE A III A 250	M270.920	06/12 → 05/18
CLASSE A III A 250 4-matic	M270.920	06/13 → 05/18
CLASSE A III A 45 AMG 4-matic	M133.980	06/13 → 05/18
CLASSE A III AMG A 45 4-matic	M133.980	07/15 → 05/18

KW 470 645



05,5

COILS

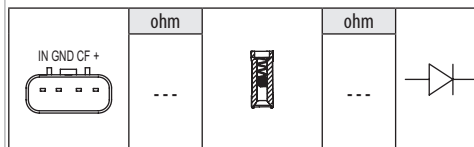
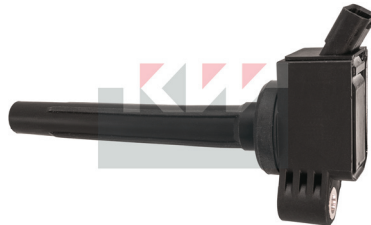
Adatt./Suitable:

TOYOTA

90919-02271

NEW - ITEM NOW AVAILABLE FROM PRODUCTION

- NUOVO - ARTICOLO ORA DISPONIBILE PER LA VENDITA
- NOUVEAU - ARTICLE DISPONIBLE EN PRODUCTION COURANTE
- NEU - JETZ ZUM VERKAUF VERFÜGBARER ARTIKEL
- NUEVO - ARTICULO AHORA DISPONIBLE EN PRODUCCION



TOYOTA

AURIS II 1.2	8NR-FTS	03/15 → 12/18
C-HR 1.2	8NR-FTS	10/16 →
C-HR 1.2 4WD	8NR-FTS	10/16 →
COROLLA 1.2	8NR-FTS, 8NR-FTS	01/19 →

KW 579 955KK



09,5

THERMOSTATS

AUDI

03C 121 065 B *24
03C 121 110 A *28
03C 121 110 F *30
03C 121 111 H
03C 121 111 K

MAGNETI MARELLI
352317003470

SEAT

03C 121 110 A *28

SKODA

03C 121 110 A *28
03C 121 110 F *30
03C 121 111 H
03C 121 111 K

VW

03C 121 065 B *24
03C 121 110 A *28
03C 121 110 C *30
03C 121 110 F *30
03C 121 111 E
03C 121 111 H
03C 121 111 K

NEW - ITEM NOW AVAILABLE FROM PRODUCTION

- NUOVO - ARTICOLO ORA DISPONIBILE PER LA VENDITA
- NOUVEAU - ARTICLE DISPONIBLE EN PRODUCTION COURANTE
- NEU - JETZT ZUM VERKAUF VERFÜGBARER ARTIKEL
- NUEVO - ARTICULO AHORA DISPONIBLE EN PRODUCCION

*24 Coolant Tube

- Condotta del refrigerante
- Tuyauterie du réfrigérant
- Kühlmittelrohrleitung
- Conducto refrigerante

*28 OE code of the thermostat only

- Codice OE del solo termostato
- Code OE du thermostat uniquement
- Nur OE-Code des Thermostats
- Código OE del termostato solamente

580 616S

*30 OE code of the thermostat only

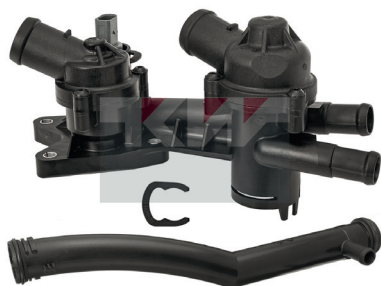
- Codice OE del solo termostato
- Code OE du thermostat uniquement
- Nur OE-Code des Thermostats
- Código OE del termostato solamente

580 620S

*205 contains article number

- contiene il numero articolo
- contient le numéro d'article
- beinhaltet Artikelnummer
- número de artículo incluido

530 278



580 617K		
580 616S	590 653	--

°C

87

580 621K		
580 620S	590 660	--

°C

87

SKODA

OCTAVIA II 1.6 FSI | BLF | 02/04 ⇨ 10/08

VW

GOLF V 1.6 FSI | BAG, BLF, BLP | 10/03 ⇨ 07/08
EOS 1.6 FSI | BLF | 06/06 ⇨ 05/08
JETTA V 1.6 FSI | BLF | 09/05 ⇨ 10/10
PASSAT V 1.6 FSI | BLF | 03/05 ⇨ 06/08
GOLF IV 1.6 FSI | BAG | 10/03 ⇨ 07/04
TOURAN I 1.6 FSI | BAG, BLF, BLP | 02/03 ⇨ 01/07

KW 579 961KK



09,5

THERMOSTATS

AUDI

03C 121 110 A *28
MAGNETI MARELLI
352317003470

SEAT

03C 121 110 A *28

SKODA

03C 121 110 A *28

VW

03C 121 065 B *24
03C 121 110 A *28
03C 121 110 E *30
03C 121 111 G
03C 121 111 J

NEW - ITEM NOW AVAILABLE FROM PRODUCTION

- NUOVO - ARTICOLO ORA DISPONIBILE PER LA VENDITA
- NOUVEAU - ARTICLE DISPONIBLE EN PRODUCTION COURANTE
- NEU - JETZT ZUM VERKAUF VERFÜGBARER ARTIKEL
- NUEVO - ARTICULO AHORA DISPONIBLE EN PRODUCCION

*24 Coolant Tube

- Condotta del refrigerante
- Tuyauterie du réfrigérant
- Kühlmittelrohrleitung
- Conducto refrigerante

*28 OE code of the thermostat only

- Codice OE del solo termostato
- Code OE du thermostat uniquement
- Nur OE-Code des Thermostats
- Código OE del termostato solamente

580 616S

*30 OE code of the thermostat only

- Codice OE del solo termostato
- Code OE du thermostat uniquement
- Nur OE-Code des Thermostats
- Código OE del termostato solamente

580 618S

*205 contains article number

- contiene il numero articolo
- contient le numéro d'article
- beinhaltet Artikelnummer
- número de artículo incluido

530 278



580 617K		
580 616S	590 653	--

°C

87

580 617K		
580 616S	590 653	--

°C

87

580 619K		
580 618S	590 660	--

°C

105

VW		
GOLF V 1.4 FSI	BKG, BLN, BLN	10/03 ⇨ 11/06

AUDI

A3 II 1.6 FSI | BAG, BLF, BLP | 08/03 ⇨ 09/07

KW 453 513

04,5

REVOLUTION AND TIMING (CKP AND CMP) SENSORS

Adatt./Suitable:

BOSCH
0 281 002 410
0 281 002 676

CASE IH
4890189

DAF
1607436

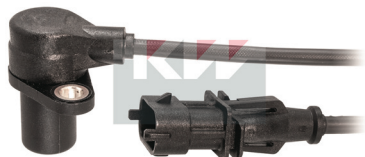
FIAT
4890189

IVECO
4890189

TEMSA
1607436

NEW - ITEM NOW AVAILABLE FROM PRODUCTION

- NUOVO - ARTICOLO ORA DISPONIBILE PER LA VENDITA
- NOUVEAU - ARTICLE DISPONIBLE EN PRODUCTION COURANTE
- NEU - JETZT ZUM VERKAUF VERFÜGBARER ARTIKEL
- NUEVO - ARTICULO AHORA DISPONIBLE EN PRODUCCION



L	L1	ohm	
215	24	900	

DAF		
CF	MX-13303, MX-13340, MX-13375	05/13 ⇔
CF 85	MX265, MX300, MX340, MX375, MX-13265, MX-13303, MX-13340, MX-13375	10/05 ⇔ 05/13
XF	MX-13303, MX-13340, MX-13375	10/12 ⇔
XF 105	MX300, MX340, MX375	10/05 ⇔

IVECO		
CROSSWAY	F4AFE611D	01/16 ⇔
EUROCARGO IV	F4AFE411A, F4AFE411B, F4AFE411C, F4AFE611A, F4AFE611C, F4AFE611D, F4AFE611E	11/13 ⇔
EUROCARGO V	F4AFE411A, F4AFE411B, F4AFE411C, F4AFE411E, F4AFE411F, F4AFE611A, F4AFE611C, F4AFE611D, F4AFE611E, F4GFE601A	09/15 ⇔

EUROCARGO I-III	F4AE0481A, F4AE0481C, F4AE0481D, F4AE0681A, F4AE0681B, F4AE0681D, F4AE0681E, F4AE3481A, F4AE3481B, F4AE3481C, F4AE3481D, F4AE368	09/00 ⇔ 09/15
TECTOR I	F4AE3681B, F4AE3681E, NEF6(F4AE3681E)	01/12 ⇔
VERTIS	F4AE3481A, F4AE3481B, F4AE3481D	10/10 ⇔

TEMSA		
HD	MX-11320	01/15 ⇔
LD	MX-11271	03/14 ⇔
MARATON	MX-11320	08/15 ⇔
SAFIR	MX300	10/09 ⇔
SAFIR PLUS	MX300, MX-11320	10/09 ⇔

KW 453 843

04,5

REVOLUTION AND TIMING (CKP AND CMP) SENSORS

Adatt./Suitable:

BOSCH
0 281 002 807
0 281 002 929

FUSO (MITSUBISHI)
ME225366
ME226858

MITSUBISHI
ME225366
ME226858

NEW - ITEM NOW AVAILABLE FROM PRODUCTION

- NUOVO - ARTICOLO ORA DISPONIBILE PER LA VENDITA
- NOUVEAU - ARTICLE DISPONIBLE EN PRODUCTION COURANTE
- NEU - JETZT ZUM VERKAUF VERFÜGBARER ARTIKEL
- NUEVO - ARTICULO AHORA DISPONIBLE EN PRODUCCION



L	L1	ohm	
830	24	907	

MITSUBISHI		
CANTER	4M42-0AT, 4M42-3AT1, 4M42-3AT4, 4M50-T5	08/05 ⇔

KW 453 844

04,5

REVOLUTION AND TIMING (CKP AND CMP) SENSORS

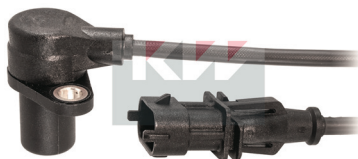
Adatt./Suitable:

BOSCH
0 281 002 630

IVECO
504049164

NEW - ITEM NOW AVAILABLE FROM PRODUCTION

- NUOVO - ARTICOLO ORA DISPONIBILE PER LA VENDITA
- NOUVEAU - ARTICLE DISPONIBLE EN PRODUCTION COURANTE
- NEU - JETZT ZUM VERKAUF VERFÜGBARER ARTIKEL
- NUEVO - ARTICULO AHORA DISPONIBLE EN PRODUCCION



L	L1	ohm	
360	24	893	

IVECO		
CROSSWAY	F4AFE611D	01/16 ⇔

KW 460 230

04,5

WHEEL SPEED SENSORS

Adatt./Suitable:

NISSAN
47900-4EA0A

NEW - ITEM NOW AVAILABLE FROM PRODUCTION

- NUOVO - ARTICOLO ORA DISPONIBILE PER LA VENDITA
- NOUVEAU - ARTICLE DISPONIBLE EN PRODUCTION COURANTE
- NEU - JETZT ZUM VERKAUF VERFÜGBARER ARTIKEL
- NUEVO - ARTICULO AHORA DISPONIBLE EN PRODUCCION



L	L1		
697	18,3	Hall Effect	

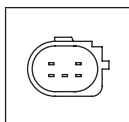
NISSAN		
QASHQAI II 1.2 DIG-T	HR12DDT, HRA2DDT	11/13 ⇔
QASHQAI II 1.3 DIG-T	HR13DDT	08/18 ⇔
QASHQAI II 1.5 dCi	K9K636, K9K646, K9K872	11/13 ⇔
QASHQAI II 1.6 dCi	R9M	11/13 ⇔
QASHQAI II 1.6 DIG-T	MR16DDT	10/14 ⇔
QASHQAI II 1.7 dCi	R9N401	01/19 ⇔
QASHQAI II 2.0	MR20DD	06/14 ⇔

EGR VALVES

Adatt./Suitable:

FIAT
5802061033
NEW - ITEM NOW AVAILABLE FROM PRODUCTION

- NUOVO - ARTICOLO ORA DISPONIBILE PER LA VENDITA
- NOUVEAU - ARTICLE DISPONIBLE EN PRODUCTION COURANTE
- NEU - JETZ ZUM VERKAUF VERFÜGBARER ARTIKEL
- NUEVO - ARTICULO AHORA DISPONIBLE EN PRODUCCION



FIAT		
DUCATO III 110 Multijet 2,3 D	F1AE0481D, F1AE3481G	08/06 →
DUCATO III 120 Multijet 2,3 D	724XE1-V3, F1AE0481D, F1AGL4114	07/06 →
DUCATO III 120 Multijet 2,3 D 4x4	F1AE0481D	03/10 →
DUCATO III 130 Multijet 2,3 D	F1AE0481N, F1AE0481T, F1AE3481D, F1AGL411D	07/06 →
DUCATO III 150 Multijet 2,3 D	F1AE3481E, F1AGL411A, F1AGL411C	06/11 →
DUCATO III 180 Multijet 2,3 D	F1AGL4111, F1AGL411B, F1AGL411B	12/15 →